

TOE  TOE 2023

FIND YOUR
SHOES

A NEW PAIR OF
FEET



THANK YOU

FOR YOUR INTEREST IN JOINING OUR

TOE TO TOE

SCHOOL SHOES INITIATIVE 2023

Sal's Shoes was set up to collect and distribute pre-loved shoes to children. The initial vision provided the dream and subsequently we have now distributed over 4 million pairs of children's shoes in 59 countries around the world, including within the UK.

Our consignments have provided many children with a pair of shoes for the very first time. As a small charity, often the only obstacle to what we can achieve is financial and we welcome any fundraising efforts. With your support, we will be able to reach more children.

So far, we have opened 9 Sal's Shoes Shops in the UK. Children visiting the stores via referral are able to retain their sense of dignity and enjoy the experience of shoe 'shopping' and trying on different footwear without their families having to pay for their Sal's Shoes.



WHY SHOES?

Many young people tend to outgrow their shoes before they outwear them. Shoes are relatively difficult to recycle because of all the different components they are made up of . . . so we find them new feet.

In lots of countries around the world, the education system is free to access, but school uniform is mandatory. This means if you can't afford a pair of shoes, you cannot go to school.

In the UK, many children start the new school year with a new pair of school shoes and this made us realise something important. What if those soon to be outgrown shoes were donated at the end of the summer term so that we could find them new pairs of feet?

In July 2016, we piloted Toe to Toe with The Hayes Primary School. Pupils chose to place their shoes on their desks at the end of the last day of the term, and left school barefoot. 300 pairs of Sal's Shoes were donated.

The following year, over 650 schools across the UK and several schools in other countries, participated in Toe to Toe. Over 175,000 pairs of Sal's Shoes were donated.

SUPPORTED BY:  **Banner**



[SALSSHOOES.COM](https://salsshoes.com)



[INFO@SALSSHOOES.COM](mailto:info@salsshoes.com)



[SALSSHOOES1](https://www.facebook.com/salsshoes1)



[SALSSHOOES](https://www.instagram.com/salsshoes)



[SALS_SHOES](https://twitter.com/sals_shoes)

HOW YOU CAN HELP

Lots of schools choose to host Sal's Shoes collections in the same way as the very first Toe to Toe at The Hayes Primary School in 2016. If you do this, we'd love to receive photographs of your pupils leaving school barefoot and their shoes left in their classrooms. These can also be shared on social media, please use the hashtag #toe2toe.

Please send your images to us via email, they can be sent to toe2toe@salsshoes.com or via direct message on our Facebook or Instagram profiles. If you'd prefer us not to share these images on our own social media channels please just let us know.

We appreciate that leaving shoes on desks isn't suitable for every school, so you might instead prefer a centrally located Sal's Shoes tub or box for donations to be left in. We would love to receive photographs of your collections.

**“IF WE ALL WORK
TOGETHER, WE CAN
MAKE A MUCH BIGGER
DIFFERENCE, MUCH
QUICKER”**

FUNDRAISING

As a relatively small charity in monetary terms, we spend our limited funds on sending your shoes to their new owners . . . sometimes as far as 10,000 miles away. For this reason, we ask for a minimum donation of £1 /pair.

We also need schools to fund the cost of delivery of their haul of Sal's Shoes to our HQ in Kent. Some schools ask their pupils, parents and carers to contribute the £1 /pair donation, and then host a cake sale to cover the cost of sending us your shoes via post or courier. Shoes can also be dropped off at our warehouse.

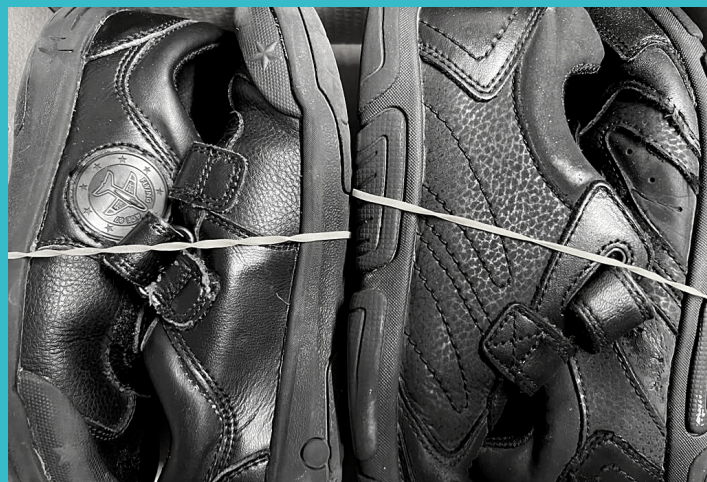
Your school may also choose to host a Sal's Own Shoes day for a monetary donation to fund the carriage, where pupils can come into school in their favourite pair of shoes for the day.



SHOE SORTING

We need your shoes to be rubber banded in pairs and sorted according to our packing templates, so some schools may assign shoe sorters (PTA members or older pupils) to check shoes are clean and rubber banded in pairs.

We ask that your Sal's Shoes be outgrown but not outworn, have laces if they need them, have no holes in soles and be presentable enough to set off straight to their new owners (often a wet cloth wiped over them will suffice).



IN THE CLASSROOM

Our information pack also includes a host of resources you may choose to use in your classrooms in the run up to your collection day.



OUR THANK YOU

All schools will receive a certificate of thanks for their donations which you can proudly display for all to see.

We'll also let you know where all your shoe donations have been sent to find their new feet. Where possible we'll share photos of the shoes being distributed and of school shoes going back to school elsewhere.



WHAT TO DO NOW

Once you have digested the contents of this pack and understood the various commitments that we require you to undertake, please visit our website and complete our online form, which can be found under UK work, or by using this link: www.salsshoes.com/donations/toetotoe



GET PLANNING

WHEN WILL YOUR COLLECTION BE?

We can accept delivery of your Sal's Shoes Toe to Toe collections throughout the year. Many schools collect at the end of the summer term, but we also have plenty of schools that collect at other times, so it is entirely up to you.

WHO WILL BE RESPONSIBLE?

Decide who will be responsible for collecting, cleaning, rubber banding, counting, sorting, packing and labelling, and delivering your Sal's Shoes.

PACKING YOUR SHOES

YOU WILL NEED:

- ☐ Black permanent marker pens
- ☐ Packing tape
- ☐ Scissors
- ☐ Multiple copies of the Sal's Shoes Box Contents sheet
- ☐ A Sal's Shoes Itemised Boxes template sheet
- ☐ A writing pen
- ☐ One-person manageable cardboard boxes (many supermarkets give them away for free)
- ☐ Rubber bands*



Please ensure for stacking and storage purposes that we receive your shoes in boxes and not bags and that your boxes are packed to capacity as much as possible.

We have included an example of a completed box contents sheet in this pack. The following need to be packed in separate boxes for boys and girls.

- Black leather school shoes
- Summer footwear – e.g. crocs, flip flops, open shoes, canvas shoes
- Trainers
- Winter footwear – e.g. snow boots, wellington boots, weatherproof boots and shoes



*If you require rubber bands, please email:

JOANNE.HARVEY@BANNERUK.COM

in advance of your Toe to Toe collection with the name and address of your school.

GETTING YOUR TOE TO TOE COLLECTIONS TO US

Your shoes can be posted, dropped-off or couriered to:

**SAL'S SHOES, EASISTORE, ENTERPRISE
WAY, EDENBRIDGE, KENT, TN8 6HF**

For those dropping off, opening times are:

Monday	7.00am - 6.00pm
Tuesday	7.00am - 6.00pm
Wednesday	7.00am - 6.00pm
Thursday	7.00am - 6.00pm
Friday	7.00am - 6.00pm
Saturday	8.00am - 5.00pm
Sunday	10.00am - 3.00pm

Please be aware that whilst we are not on site at all times, the staff on reception at Easistore will accept your delivery on our behalf. If you are bringing along a cheque in an envelope, please ensure it is in a separate, sealed, addressed envelope and left with the staff on reception. Please do not leave cash donations at reception.

Please ensure all your boxes have the name of your school completed on the box contents sheet attached, and that your itemised boxes sheet has been emailed to toe2toe@salsshoes.com with your school name as the subject by the day we receive your shoes.



The £1/pair monetary donation and any surplus from the fundraising to cover your carriage costs can be transferred online via our website or via PayPal. Please use the name of your school as a reference and ensure we receive your monetary donation by the same day as your delivery of shoes. If you are donating via cheque, please make the cheque out to Sal's Shoes and send it in a separate envelope to the same address (please do not send any cash or cheque donations in your boxes).

For schools participating in Northern Ireland, your collections can be delivered to:

**SAL'S SHOES, DENIS WILSON OF GLENNAVY
LTD, 160 MOIRA ROAD, GLENNAVY, CRUMLIN,
CO ANTRIM, BT29 4LR**

Monday	8.30am - 5.30pm
Tuesday	8.30am - 5.30pm
Wednesday	8.30am - 5.30pm
Thursday	8.30am - 5.30pm
Friday	8.30am - 5.30pm
Saturday	8.30am - 5.30pm
Sunday	9.00am - 1.00pm

For schools participating in Cyprus and Dubai or those wishing to participate in other countries, please email:

TOE2TOE @SALSSHOES.COM

with your country as the subject to find out your address for delivery.

**YOU HAVE BRAINS
IN YOUR HEART.
YOU HAVE FEET IN YOUR SHOES.
YOU CAN STEER
YOURSELF IN ANY DIRECTION
YOU CHOOSE.**
DR SEUSS

Sal's Shoes is a registered charity in England and Wales.
Registered Charity Number: 1171670

All images provided by Sal's Shoes. Logo by
rsl.creative.com and information pack by Source It Out.
Copyright remains with respective owners.



SALSSHOES.COM



INFO@SALSSHOES.COM



[SALSSHOES1](https://www.facebook.com/SALSSHOES1)



[SALSSHOES](https://www.instagram.com/SALSSHOES)



[SALS_SHOES](https://twitter.com/SALS_SHOES)

HOW YOUR SHOES FIND NEW FEET

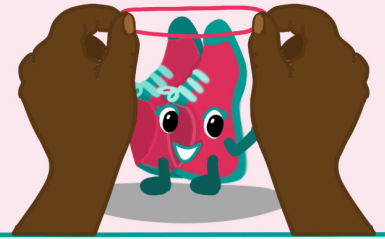
YOU OUTGROW YOUR SHOES BUT THERE'S STILL LOTS OF WEAR LEFT IN THEM.



SO YOU GIVE THEM A QUICK CLEAN AND MAKE SURE THEY'VE GOT LACES IF THEY NEED THEM.



THEN YOU PAIR THEM TOGETHER WITH A RUBBER BAND.



POP THEM IN THE POST (OR ORGANISE A COURIER IF YOU'VE GOT LOTS OF PAIRS).



DONATE £1 FOR EVERY PAIR YOU SEND TO US.



WE ACCEPT DONATIONS THROUGH OUR WEBSITE, PAYPAL OR BANK TRANSFER.

EACH POUND FUNDS THE NEXT JOURNEY YOUR SHOES WILL GO ON TO FIND THEIR NEW PAIR OF FEET.



SHOES ARRIVE WITH US AND OUR VOLUNTEERS SORT THEM ALL OUT AT OUR WAREHOUSE.



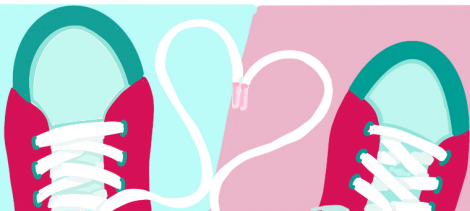
THEN YOUR SHOES SET OFF ON A JOURNEY TO FIND THEIR NEXT OWNER.



WE KNOW WHERE EVERY SINGLE PAIR STARTS WALKING AGAIN, THEY GO TO ALL SORTS OF PLACES IN THE UK AND AROUND THE WORLD.



IN THE UK, YOUR SAL'S SHOES FIND THEIR NEW FEET AT ALL SORTS OF PLACES INCLUDING SCHOOLS, SOUP KITCHENS, HOMELESS SHELTERS, DOMESTIC VIOLENCE REFUGES, ASYLUM SEEKER AND REFUGEE CENTRES AND THROUGH SOCIAL WORKERS.



WE DO WHAT WE DO BECAUSE FEET IN SHOES ARE FEET PROTECTED FROM INJURY AND INFECTION.



YOUR DIFFERENT TYPES OF SHOES MEAN WE CAN HELP PEOPLE IN DIFFERENT WAYS: GOING TO SCHOOL, PLAYING FOOTBALL, PROTECTING FEET FROM THE SUN, THE RAIN AND THE COLD, DANCING FEET AND RUNNING FEET JUST TO NAME A FEW.

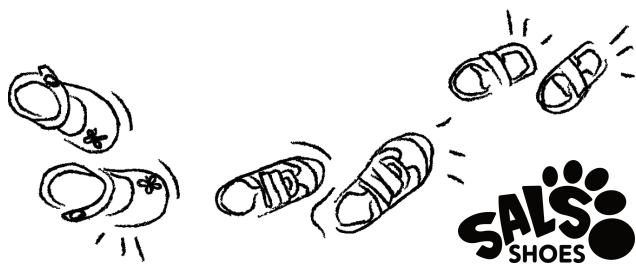


CAN YOU HELP US PROTECT MORE FEET?



Please fold and tuck securley into your pair of shoes or the rubber band holding them together

A MESSAGE TO THE NEW OWNER OF MY SHOES:



Please fold and tuck securley into your pair of shoes or the rubber band holding them together

A MESSAGE TO THE NEW OWNER OF MY SHOES:



Please fold and tuck securley into your pair of shoes or the rubber band holding them together

A MESSAGE TO THE NEW OWNER OF MY SHOES:

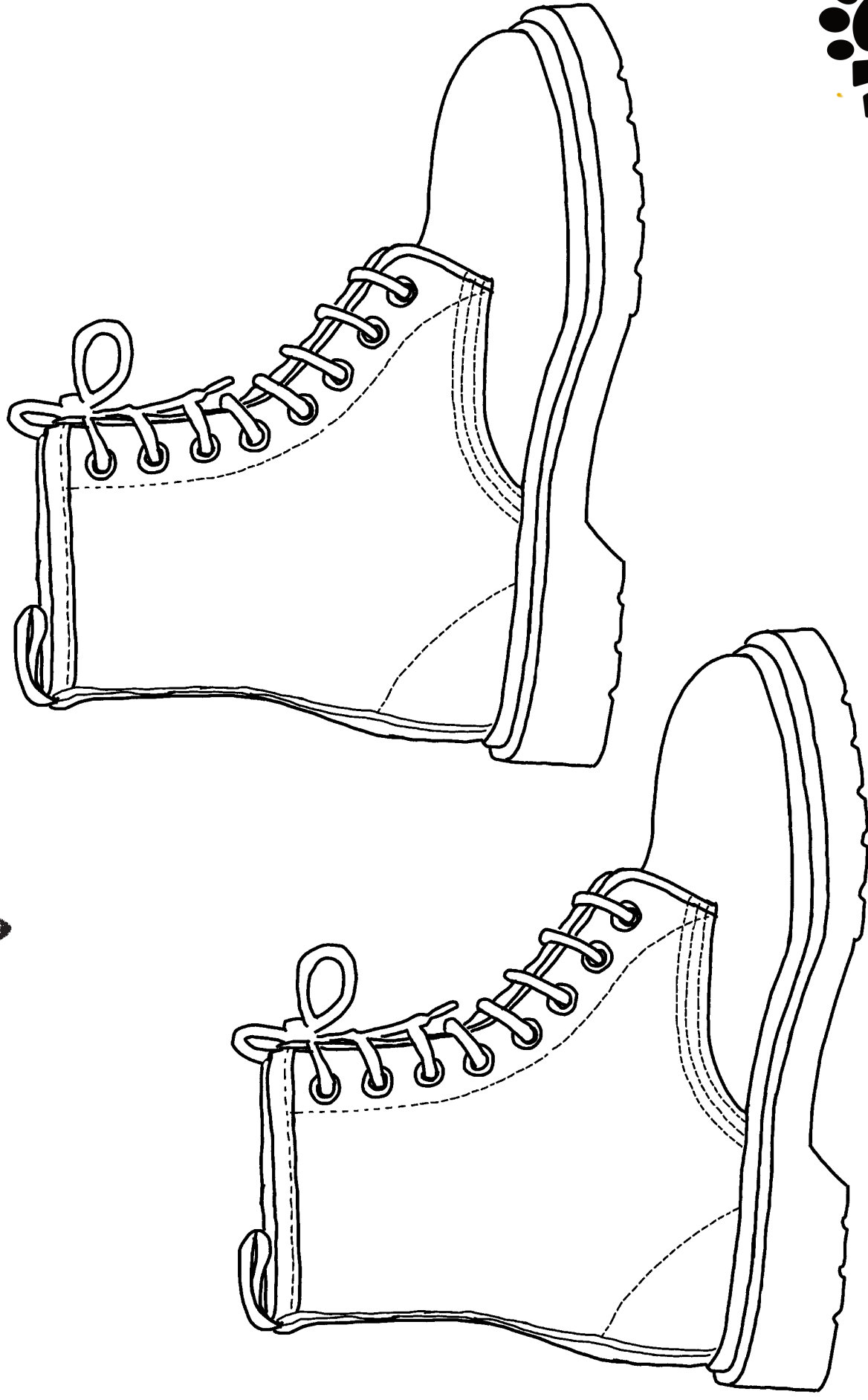


Please fold and tuck securley into your pair of shoes or the rubber band holding them together

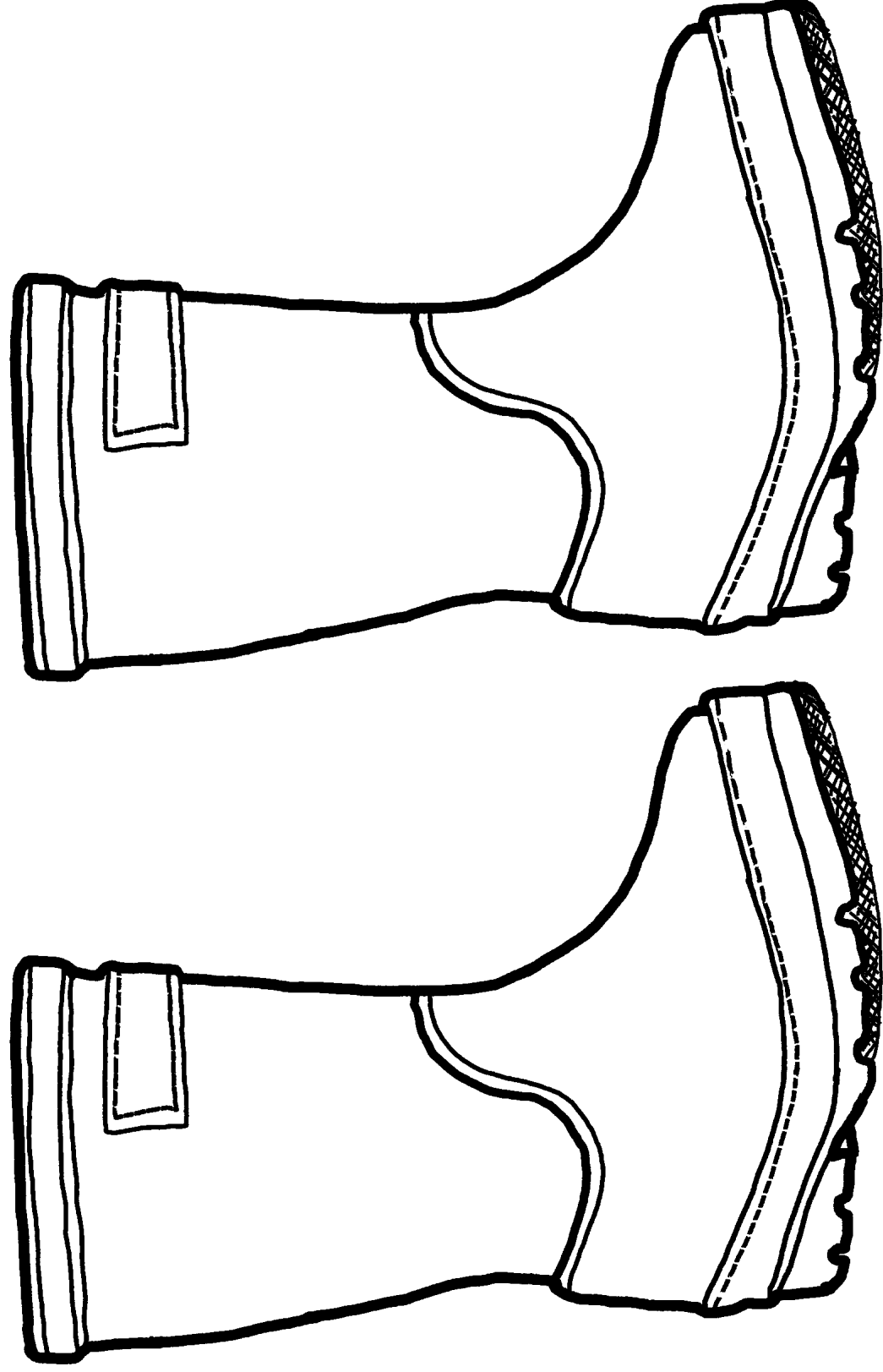
A MESSAGE TO THE NEW OWNER OF MY SHOES:



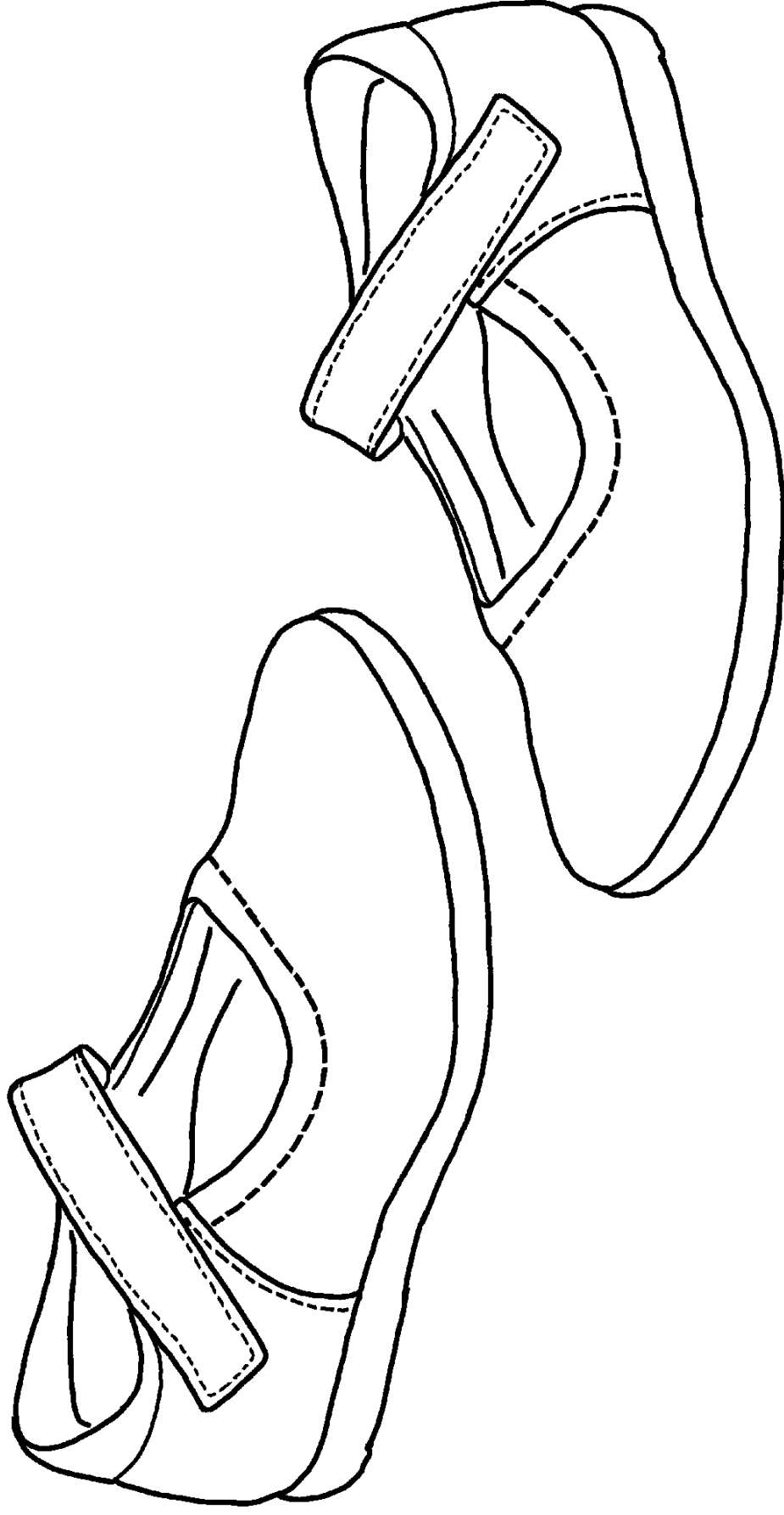
DESIGN YOUR OWN SHOES



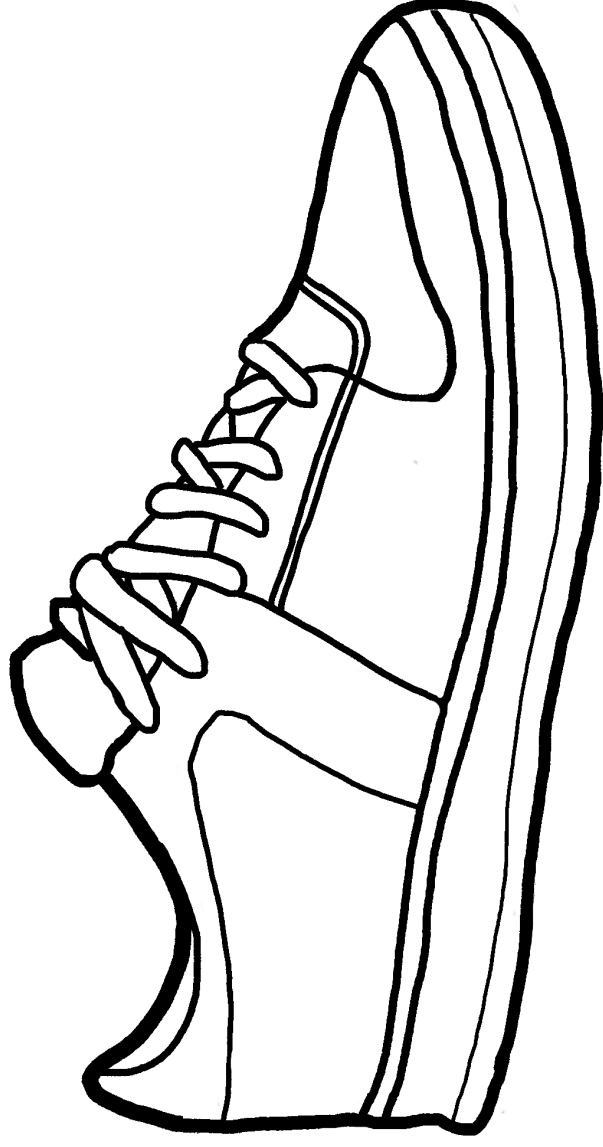
DESIGN YOUR OWN SHOES



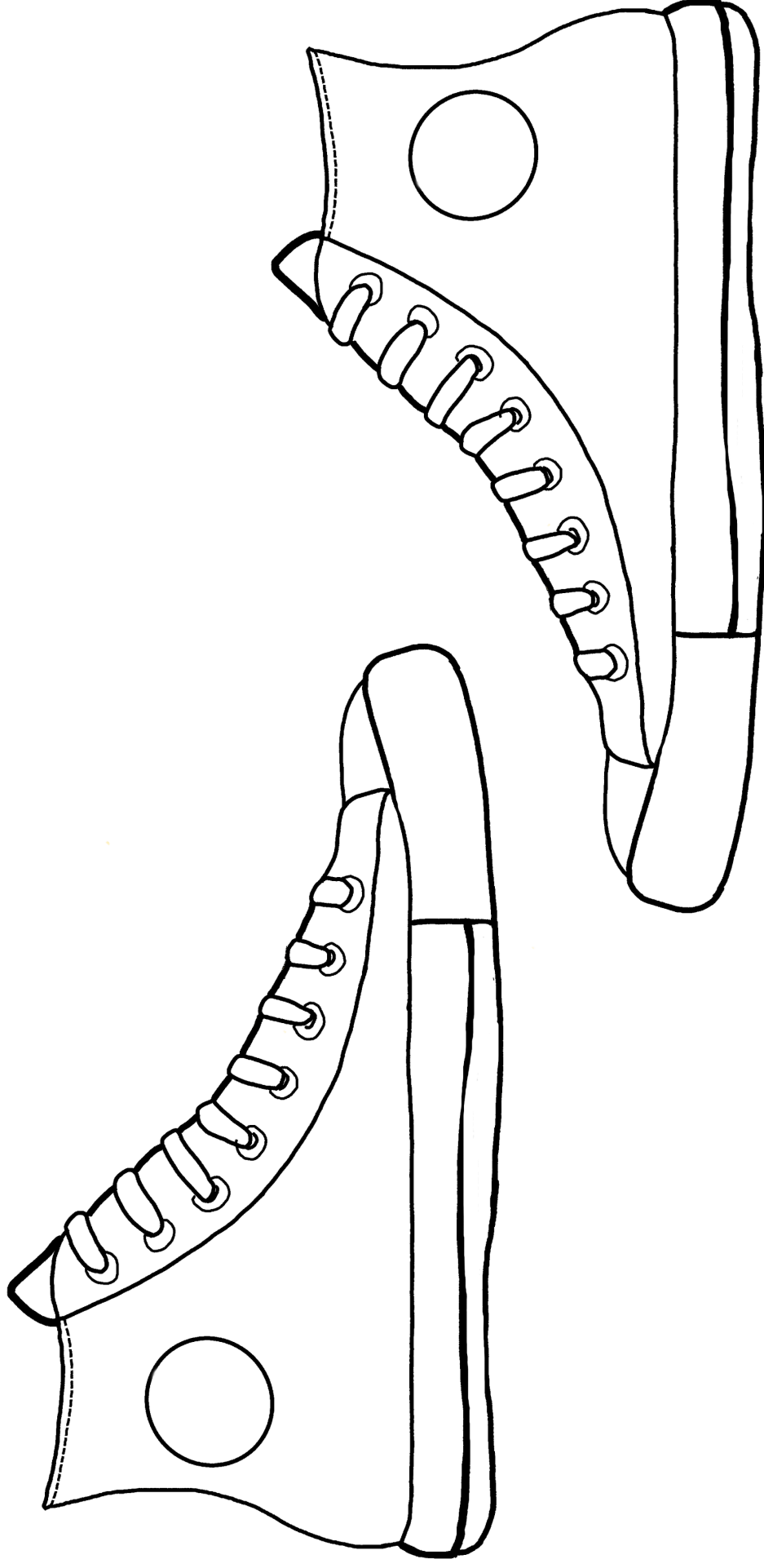
DESIGN YOUR OWN SHOES



DESIGN YOUR OWN SHOES



DESIGN YOUR OWN SHOES



SALSO
SHOES

NAME OF SCHOOL: _____



DATE OF DELIVERY TO SAL'S SHOES: _____

FUNDS RAISED: _____


DELETE AS APPROPRIATE: (CHEQUE/ONLINE TRANSFER/PAYPAL)

BOX NUMBER	BOYS OR GIRLS	NUMBER OF PAIRS IN BOX	TYPE OF SHOES	FURTHER DETAILS
EXAMPLE	B / G	18	SUMMER	
	B	21	TRAINERS	0-5 YRS
1				
2				
3				
4				
5				
6				
7				
8				
9				
10				
11				
12				
13				
14				
15				
16				
17				
18				
19				
20				

TOTAL NUMBER OF PAIRS: _____

Please ensure that this completed list of your itemised boxes is emailed to us at toe2toe@salsshoes.com with the name of your school as the subject by the day we receive your delivery of Sal's Shoes.

NAME OF SCHOOL:

BOX NUMBER:		NUMBER OF PAIRS:



SUMMER FOOTWEAR 0-5 YRS - PACKED AS BOYS/GIRLS TOGETHER

WINTER FOOTWEAR 0-5 YRS - PACKED AS BOYS/GIRLS TOGETHER

SLIPPERS - PACKED AS BOYS/GIRLS TOGETHER

FOOTBALL BOOTS - PACKED AS BOYS/GIRLS TOGETHER

SCHOOL SHOES - BLACK LEATHER

CANVAS SHOES - E.G. CONVERSE

SANDALS - E.G. CROCS, FLIP FLOPS, OPEN SHOES

TRAINERS

WINTER FOOTWEAR - E.G. SNOW BOOTS, LEATHER WATERPROOF BOOTS

PARTY SHOES - E.G. GLITTERY, VERY STRAPPY, IMPRACTICAL OR NON-BLACK LEATHER SHOES

EXAMPLE OF BOX CONTENTS

Each box must have one of these securely attached on the outside.

If your box contents include a variety of different types of shoes (to ensure a packed to capacity box), please detail as much as possible on this sheet.

DON'T FORGET TO WRITE THE NAME OF YOUR SCHOOL ON TOP OF EACH BOX CONTENTS SHEET

BOX NUMBER: 6		NUMBER OF PAIRS: 24
BOYS		
WINTER FOOTWEAR		