

HOW YOUR SHOES FIND NEW FEET

YOU OUTGROW YOUR SHOES BUT THERE'S STILL LOTS OF WEAR LEFT IN THEM.



SO YOU GIVE THEM A QUICK CLEAN AND MAKE SURE THEY'VE GOT LACES IF THEY NEED THEM.



THEN YOU PAIR THEM TOGETHER WITH A RUBBER BAND.



POP THEM IN THE POST (OR ORGANISE A COURIER IF YOU'VE GOT LOTS OF PAIRS).



DONATE £1 FOR EVERY PAIR YOU SEND US.



WE ACCEPT DONATIONS THROUGH OUR WEBSITE, PAYPAL OR BANK TRANSFER.

EACH POUND FUNDS THE NEXT JOURNEY YOUR SHOES WILL GO ON TO FIND THEIR NEW PAIR OF FEET.



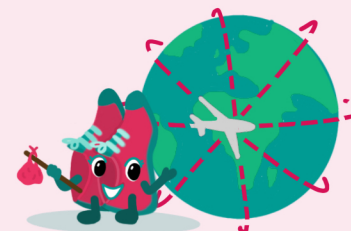
SHOES ARRIVE WITH US AND OUR VOLUNTEERS SORT THEM ALL OUT AT OUR WAREHOUSE.



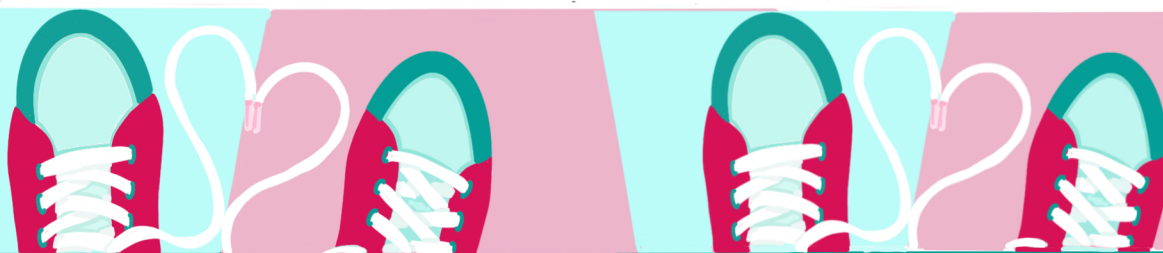
THEN YOUR SHOES SET OFF ON A JOURNEY TO FIND THEIR NEXT OWNER.



WE KNOW WHERE EVERY SINGLE PAIR STARTS WALKING AGAIN. THEY GO TO ALL SORTS OF PLACES IN THE UK AND AROUND THE WORLD.



IN THE UK, YOUR SAL'S SHOES FIND THEIR NEW FEET AT ALL SORTS OF PLACES INCLUDING SCHOOLS, SOUP KITCHENS, HOMELESS SHELTERS, DOMESTIC VIOLENCE REFUGES, ASYLUM SEEKER AND REFUGEE CENTRES AND THROUGH SOCIAL WORKERS.



WE DO WHAT WE DO BECAUSE FEET IN SHOES ARE FEET PROTECTED FROM INJURY AND INFECTION.



YOUR DIFFERENT TYPES OF SHOES MEAN WE CAN HELP PEOPLE IN DIFFERENT WAYS: GOING TO SCHOOL, PLAYING FOOTBALL, PROTECTING FEET FROM THE SUN, THE RAIN AND THE COLD DANCING FEET AND RUNNING FEET JUST TO NAME A FEW.



CAN YOU HELP US PROTECT MORE FEET?

